



CHALK PAINT® *Fact sheet*

ANNIE SLOAN CHALK PAINT



A unique decorative paint for furniture, walls and paint effects.

GETTING STARTED

Versatile, easy-to-use and fun! Chalk Paint® is for everybody - from casual weekend upcyclers to dedicated furniture restoration artists.

There's no need for priming or sanding. Just pop open your tin, dip in your brush and apply the paint to furniture.

Chalk Paint can be used for a number of different paint effects. Below we have provided you with three different techniques to get you started.

You can use the **CHALK PAINT COLOUR CARD** to help you decide on the perfect colours for your project.

You can also mix Chalk Paint colours to create your very own hue!

For more advice and tutorials visit:

www.AnnieSloan.com



SMOOTH MODERN FINISH

YOU WILL NEED

- Chalk Paint • Clear Chalk Paint Wax or Chalk Paint Lacquer • Annie Sloan Flat Brush • Optional: Annie Sloan Sanding Pads

1. If the surface isn't smooth to start with use a Sanding Pad to remove any lumps, bumps or texture.
2. Apply two thin coats using a Flat Brush and paint gently, using the tip of the brush (avoid applying pressure as this creates marks) and don't overload the brush.
3. Once dry, you can wax! Use Clear Chalk Paint Wax and work into the paint using a lint-free cloth or Chalk Paint Wax Brush. For a glossy finish: allow 24 hours then use a clean lint free cloth to buff the waxed surface to a shine, or instead of wax use Gloss Chalk Paint Lacquer.

Tip For an extra smooth finish, lightly sand away any brush marks ahead of waxing. When using Lacquer, apply one coat, sand, then apply a second.

TWO COLOUR DISTRESS

YOU WILL NEED

- Two Chalk Paint Colours • Clear Chalk Paint Wax • Annie Sloan Sanding Pads • Optional: Dark, Black or White Chalk Paint Wax

1. Apply a thick coat of your base colour. Chalk Paint Brushes are designed to hold lots of paint to help with this. Once dry, apply a thinner coat of your second colour. Leave to dry thoroughly.
2. Apply Clear Chalk Paint Wax to your piece - working it into the surface using a lint-free cloth or Chalk Paint Wax Brush.
3. Use the Sanding Pads to reveal areas of your base colour. Concentrate on edges and corners. Sand back further to reveal the original surface.
4. Wipe away sanding dust and apply a final coat of Clear Chalk Paint Wax.

Tip To further emphasize the shape and texture of your furniture apply Dark, Black or White Chalk Paint Wax.

TEXTURED EFFECT

YOU WILL NEED

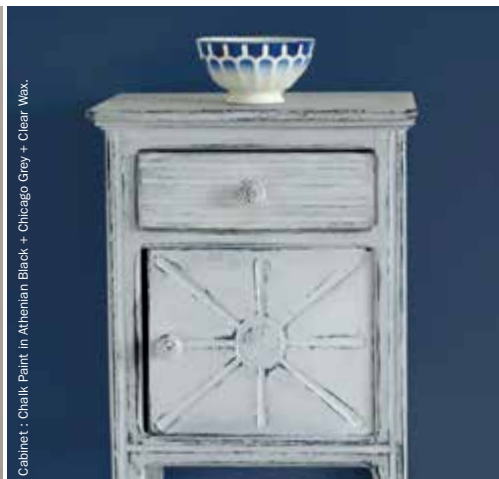
- Chalk Paint • Annie Sloan Chalk Paint Brush • Clear Chalk Paint Wax • Dark, Black, or White Chalk Paint Wax • Optional: Hair dryer

1. Apply two thick coats of Chalk Paint. Brush expressively with a Chalk Paint Brush to create texture. For even more texture: when the paint is almost dry go over it again to create more brush marks. Dry with a hair Dryer to form cracks.
2. Apply Clear Chalk Paint Wax to your piece - working it into the surface using a lint-free cloth or Chalk Paint Wax Brush.
3. For an aged, industrial or coastal look respectively apply a coat of Dark, Black or White Chalk Paint Wax to emphasize the brush marks, cracks and texture. Leave to dry in a warm place for 24 hours.

Tip To remove excess coloured wax, use a little Clear Chalk Paint Wax on a lint-free cloth and rub away.



Cabinet : Chalk Paint in Emperor's Silk + Clear Wax.



Cabinet : Chalk Paint in Athenian Black + Chicago Grey + Clear Wax.



Cabinet : Chalk Paint in Antibes Green + Black Chalk Paint Wax.

Chalk Paint versatility

Chalk Paint adheres to most surfaces, indoors and outdoors, and you rarely need to sand or prime before painting. Annie always recommends performing a small patch test – and then you can get stuck into the fun bit!

Tips & Tricks

- Always stir Chalk Paint thoroughly before use.
- On very shiny or glossy surfaces you may want to lightly sand to break the surface. Applying multiple thin coats will also help Chalk Paint to adhere better!

- If you ever see “bleed through” on wooden furniture, apply a coat of clear shellac as a base and then apply Chalk Paint as normal.
- For more information about all these, and hundreds of other tips, tricks and Chalk Paint techniques, head to www.AnnieSloan.com

Chalk Paint on Walls

For a velvety matt finish or if you are painting over lime plaster or other finishes that require a breathable paint, we recommend you use Chalk Paint without sealing. If your walls are not permeable you can seal them with Clear Chalk Paint Lacquers or Wax to give a wipeable finish.

Chalk Paint on Floors

Chalk Paint transforms wooden or concrete floors – even if they’ve been previously painted or varnished. Dilute Chalk Paint and create a white wash for floorboards or create a stencilled tile effect on concrete! Finish with Chalk Paint Lacquer for durability.

Chalk Paint in Kitchens

Chalk Paint can be used to transform a tired old kitchen; it even works on melamine and laminate cupboards! Build up thin layers of coverage on these shinier surfaces and leave plenty of time for each coat to dry. Always finish with Chalk Paint Wax or Lacquer.

Chalk Paint Outdoors

Chalk Paint can be used outdoors and is particularly great on rough textures such as: brick, stone, terracotta, concrete, sheds, and fencing! Horizontal surfaces and garden furniture should be given two coats of Chalk Paint Lacquer to protect after painting.



Waxes and Lacquers

Chalk Paint should be sealed with Chalk Paint Wax or Chalk Paint Lacquer to protect and finish.

Chalk Paint Wax

Always use a lint-free cloth or Chalk Paint Wax Brush to apply. Work the wax into the Chalk Paint and wipe away excess before leaving to dry.

Create a shiny finish by leaving for 24 hours and then buff to a sheen.

Wax will be touch dry within a few hours and cures completely in 5-21 days. You can use your furniture straight away but take extra care not to chip or scratch during the curing period.

Coloured Waxes can be used to adjust Chalk Paint colours; e.g Dark Chalk Paint Wax over Emperor’s Silk will deepen the red.

Chalk Paint Lacquers

Always test Chalk Paint Lacquer over a patch of Chalk Paint to ensure there is no bleed through from your furniture.

If extra durability is required Annie recommends a coat or two of Gloss Lacquer followed by a final single coat of Matt Lacquer.

Find your local Stockist and nearest Workshops at:

www.AnnieSloan.com

Follow us on social media:

